

**2000  
cd/m<sup>2</sup>**

**12" Field  
Monitor**

**HDR  
SUPER BRIGHT**



## **Extreme Super Bright Screen OBM-H120**

The Postium OBM-H Series are designed for daylight monitoring in HD/SD broadcast and motion picture production monitoring applications. The OBM-H120 utilizes a 12.1" 1280x800 resolution LCD with a maximum luminance output of 2000 cd/m<sup>2</sup>.

The OBM-H Series accepts up to 1080 60P signals scaled to native resolution and is equipped with standard 3G/HD-SDI input interfaces (x2) as well as an HDMI 1.3a input and analog component/composite I/O. Closed Captioning decode and display for CEA-708(HD-SDI closed captioning standard) and CEA-608(SD-SDI closed captioning standard) is supported via SDI input.

*3G-SDI x2 Input & Active Loopout  
HDMI / Analog / DVI Input  
3D-LUT for Accurate Color Reproduction  
HD HDR Support  
Color Depth 1.064 Billion Colors*

*Waveform & Vector Scope  
IMD / 16ch Audio Level Meter  
System Data Copy & Load  
Remote Control via GPI and Network  
Panel Resolution 1280 x 800(12")*



**POSTIUM KOREA** Co., Ltd.  
[www.postium.com](http://www.postium.com)

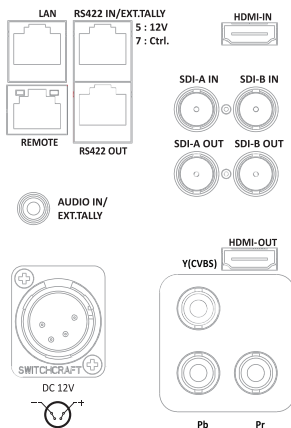
# Extreme Super Bright Screen **OBM-H120**

## Specifications

ITEM	OBM-H120	
Input	BNC (SDI)	2 x 3G/HD/SD-SDI
	HDMI	1 x HDMI 1.3a
	BNC (YPbPr)	3 x Analog(YPbPr)
	BNC (CVBS)	1 x Composite
	DVI	-
Output	BNC (SDI)	2 x 3G/HD/SD-SDI
	HDMI	1 x HDMI 1.3a
Input Signal Format	SMPTE ST 425-AB	1080p(60/59.94/50/30/29.97/25/24/23.98/30sF/29.97sF/25sF/24sF/23.98sF) / 1080i (60/59.94/50)
	SMPTE ST 274	1080p(30/29.97/25/24/23.98/24sF/23.98sF)
		1080i (60/59.94/50)
	SMPTE ST 296	720p(60/59.94/50)
	SMPTE ST 260	1920 x 1035i(60/59.94)
	SMPTE ST 2048	2048 x 1080p(24/23.98/24sF/23.98sF)
	SMPTE ST 125	480i(59.94)
	ITU-R BT.656	576i(50)
	HDMI	~ 1080p(60)
	DVI-D	VESA/IBM Modes
Audio In/Out	1 x Phone Jack In	Line In(Stereo)
	1 x Phone Jack Out	H/P Out(Front, Stereo)
	2 x Speaker Out	Stereo
Display	Size	12.1"
	Resolution	1280 x 800
	Pixel Pitch	0.204mm
	Color	1.064B colors(8bit+2bit FRC)
	Viewing Angle	178(H), 178(V)
	Luminance of White	2000cd/m <sup>2</sup>
	Contrast	1000 : 1
	Display Area (H x V)	261.12x 163.2 (mm)
General	1 x Ethernet	Control/Update, RJ-45P Input / Output
	1 x GPIO	GPI-7 Port, RJ-45P Jack
	2 x Serial	RS-422 Jack, RJ-45P Input / Output
	1 x USB	For Frmware Update, Color Calibration
	Power Requirements	DC12V
	Power Consumption	Max 39W
	Operating Temperature	0 ~ 40°C(32°F~104°F)
	Operating Humidity	20 ~ 80% RH
	Weight	Main Body : 2.2KG(4.85lb)/With Stand : 3.2KG(7.05lb)
	Dimensions(main body)	304.5X 237.5 X 42 mm/11.98 x 9.33 x 1.65inch
	Dimensions(With Stand)	348.4 x 249.5 x 110mm/13.70 x 9.82 x 4.33inch
	Accessories	Power Cable
	Option	Rack Mount Kit / Carrying Case / Sun Hood / Acrylic Protector / V-Mount

\* Specifications are subject to change without prior notice for the product quality improvement.

### Rear Panel



### Dimensions

--Main Body : 304.5 x 237.5 x 41 mm (11.98 x 9.35 x 1.61 inch)  
 --With Stand : 348.4 x 249.5 x 110 mm (13.71 x 9.82 x 4.33 inch)

### Weight

--Main Body : 2.4kg / 5.29lbs --With Stand : 3.2kg / 7.05lbs

